



FOR SUBLEASE

1900 M ST NW
WASHINGTON DC 20036

100 - 2,500 SF

**TERM: THROUGH
DECEMBER 2034
BASE RENT: NEGOTIABLE**

PROPERTY HIGHLIGHTS

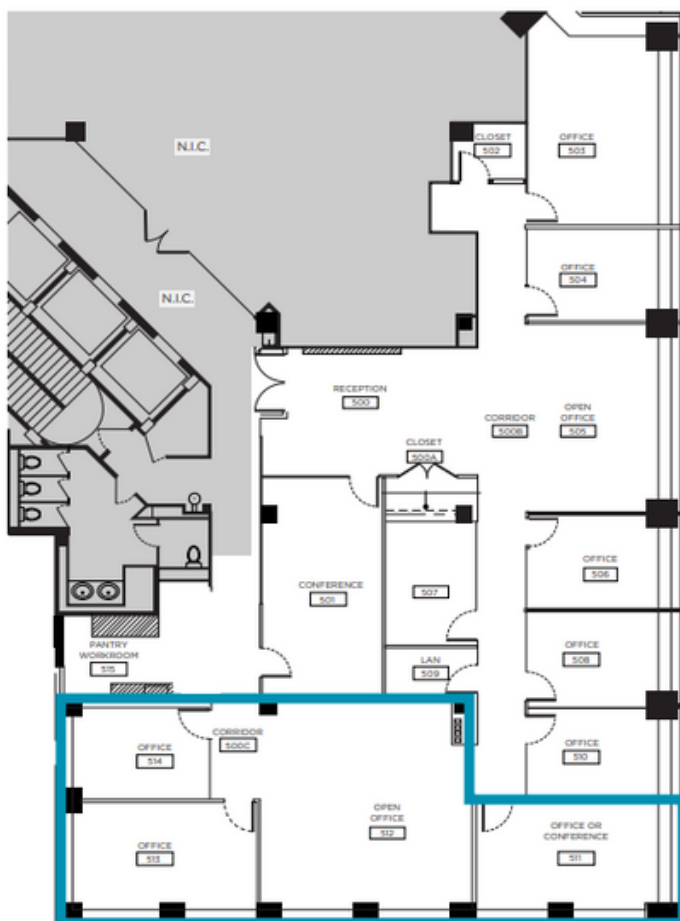
- Ability to sublease individual offices and/or workstations or the entirety of the highlighted area
- Building is delivering new lobby, conference facility, fitness center, and tenant lounge | To be delivered by the end of 2023
- Fully furnished
- Plug and play
- Shared conference room and pantry with prime tenant



amitchell@nhc.org
www.nhc.org

CALL NOW
202-466-2121 EXT. 232

FLOOR PLAN



AVAILABLE:
3 Offices
5 Workstations

FOR SUBLEASE

