



Build Healthy  
Places Network

# Bridging the Gap Between Health and Housing

January 27, 2022

# Build Healthy Places Network

A national center at the intersection of **community development and health**, leading a movement to accelerate investments and speed and spread solutions for building healthy and production communities.



Engage



Educate



Synthesize

# Health and Community Development

Where we are:

Poor health outcomes and disparities, patchwork and siloed approaches, and misaligned incentives

Creatively leveraging assets and framing opportunities for strategic engagement, cross-sector partnerships and co-investment

Where we want to be:

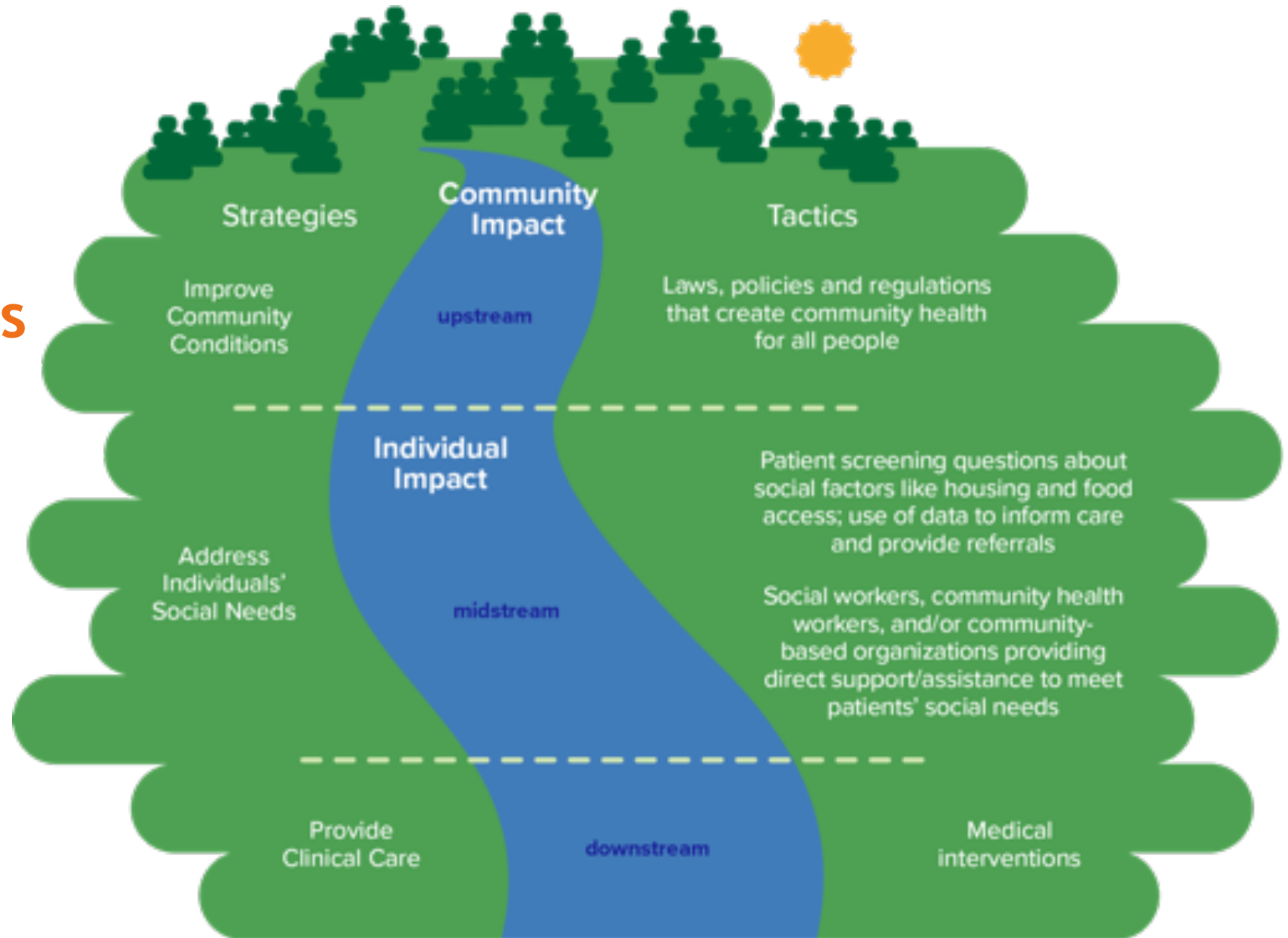
Equitable, healthy, safe, and prosperous communities

Your work is creating health in neighborhoods

48314 >



# Deepening impact through upstream investments in the Social Determinants of Health (SDOH)



# ***THE \$1 TRILLION PROBLEM***

*However, healthcare annually spends more than 1 trillion dollars treating preventable conditions caused by poverty*



# ***THE OPPORTUNITY***

*How can we change the calculation  
to increase investments in social  
determinants of health & accelerate  
racial and health equity?*





# Broadly, why is the health sector interested in partnering?

Diversity of motivators propelling health system interest

## Motivators and pain points drive partnerships

*Regulatory  
requirements  
for Community  
Benefit*

*Cost savings  
and reducing  
ED use*

*Property reuse,  
rehabilitation  
and new  
construction*

*Anchor role  
and mission  
alignment*

*Addressing  
social needs*

*New payment  
models  
emerging for  
value-based  
care*



# Examples in the Field

# Range of potential investment opportunities

Range of investment opportunities			
<i>Thought Leadership, Advocacy &amp; Clout</i>	<i>Community Benefit / Grants</i>	<i>Programs and Services</i>	<i>Co-location of services</i>
<i>Data Sharing (CHNA / CHIP)</i>	<i>Loan guarantee / Lines of credit</i>	<i>Direct loans; Investment in loan funds</i>	<i>Land Swap, Donation, or Lease</i>
<i>Property reuse, rehabilitation and new construction</i>	<i>Comprehensive approaches for social needs and social determinants of health*</i>		<i>Co-investment in funds (Wellness Funds, Housing Funds)</i>

\*Approaches for addressing social needs and social determinants of health include but are not limited to: meaningful work and wealth; housing and homelessness; integrated health services including primary care, behavioral health, prevention and wellness; early care, early childhood education, lifelong learning; youth development; food security; built environment, and others



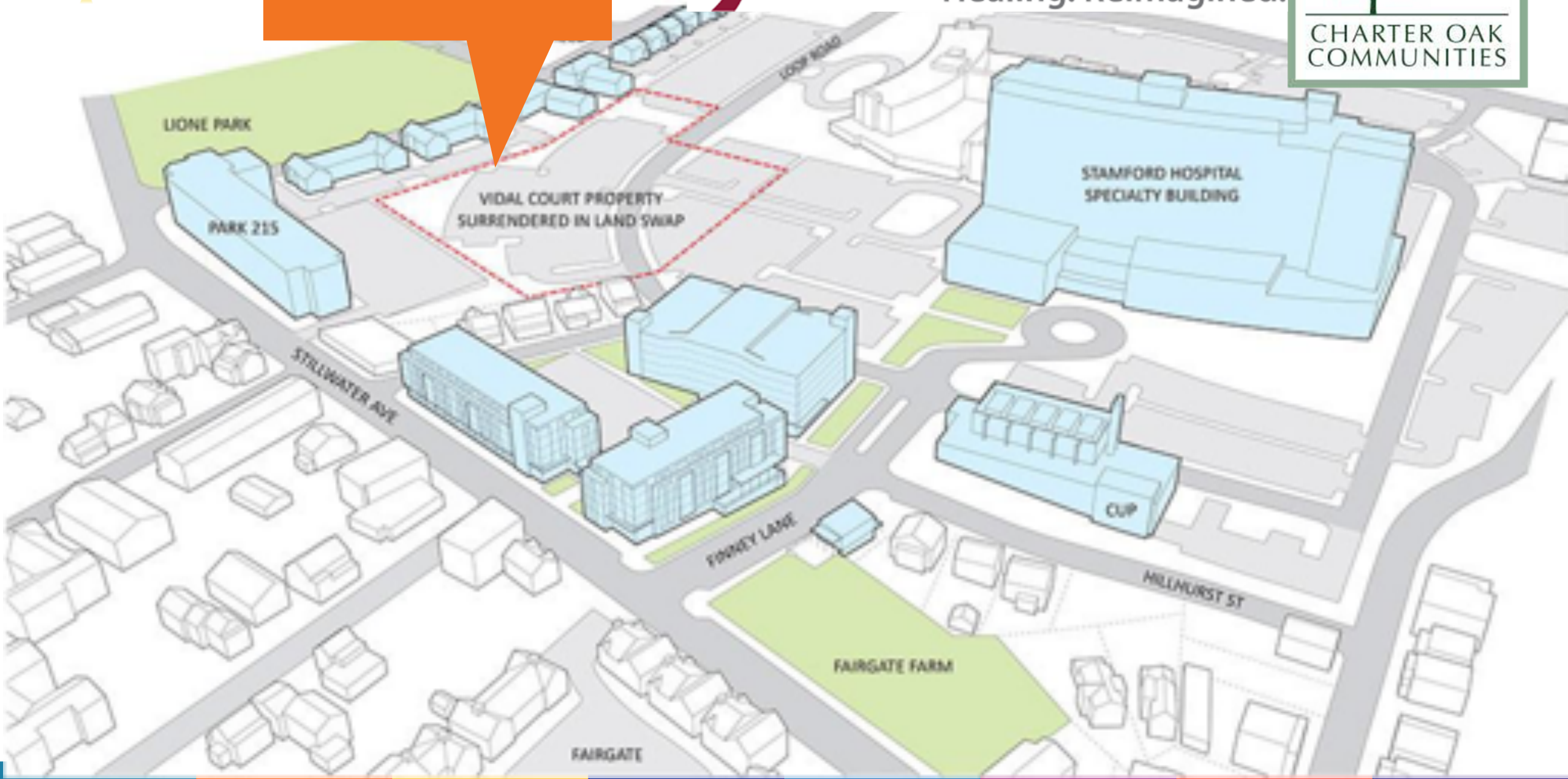
LAND SWAP SITE



**STAMFORD HEALTH**  
Healing. Reimagined.



CHARTER OAK  
COMMUNITIES







### Important role of Charter Oaks Communities:

- Evolved from Housing Authority was exploring easys to replace outdated public housing
- Capacity and understanding of a range of financial resources and community need
- Provided land to swap

### Motivators for Health System engagement:

- Looking to expand hospital campus
- Vision and commitment to population health
- Strategic improvements and additional programming and services for residents

## Stamford Health + Charter Oaks Communities Stamford CT

Stamford Health and Charter Oaks is a partnership between housing authority and hospital including a land swap aimed at revitalizing a neighborhood, including housing and urban farming concurrent with a new hospital construction.

Learn more: <https://www.buildhealthyplaces.org/sharing-knowledge/publications/community-close-ups/vita-health-wellness-district-stamford-connecticut/>





### Important role of LIFT Orlando:

- Local leadership and commitment to collaboration
- Partnerships to bolster capacity
- Vision for community well-being and social connectivity

### Motivators for Health System engagement:

- Interest and leadership in co-investments, co-design of strategies, and co-location of services
- Leveraged data as a project contribution
- Identified alignment between healthcare vision and community vision

## West Lakes Partnership + LIFT Impact Investment Fund Orlando, FL

LIFT Orlando supports the West Lakes Partnership to revitalize neighborhoods through access to affordable and consistent healthcare, nutrition and exercise, housing, early care and youth development.

**Learn more:** <https://www.buildhealthyplaces.org/sharing-knowledge/publications/community-close-ups/the-west-lakes-community-wellness-center-orlando-florida/>





Build Healthy  
Places Network



[BuildHealthyPlaces.org](https://BuildHealthyPlaces.org)



[@BHPNetwork](https://twitter.com/BHPNetwork)



[linkedin.com/company/  
Build-Healthy-Places-Network](https://linkedin.com/company/Build-Healthy-Places-Network)



[cflynn@buildhealthyplaces.org](mailto:cflynn@buildhealthyplaces.org)

Colleen Flynn, Senior Director of National Programs

