

Disaster Recovery – Butte County Camp Fire

Image Source: *The Enterprise-Record*



CHIP

Community Housing Improvement Program
www.chiphousing.org



CHIP

Community Housing Improvement Program
www.chiphousing.org



CHIP

Community Housing Improvement Program
www.chiphousing.org

Community Profile

- Butte County
 - Total population 225,207
 - Median HHI \$46,516 (CA is \$67,169)
 - 2/3 of renters are low-income
 - 1/3 of homeowners are low-income
 - Increasing homelessness (2015-2017)
 - 1-2% vacancy rate (pre-fire)
 - Rate of homeownership - 58%
 - 55% of renters cost burdened
 - 28% of owners cost burdened
 - 35% of residents have SSI (CA is 27%)
 - 82% of population identifies as white (CA is 61%)
- Town of Paradise
 - Population 46,766
 - Median HHI \$49,348
 - 30% of population 62+ (CA average is 16%)
 - 13% of seniors have a disability
 - Low home values (1/5 of owner-occupied was less than 100k)
 - 30% mobile homes
- Natural affordability (historically)
- Rural
- Lack of economic diversity



CHIP

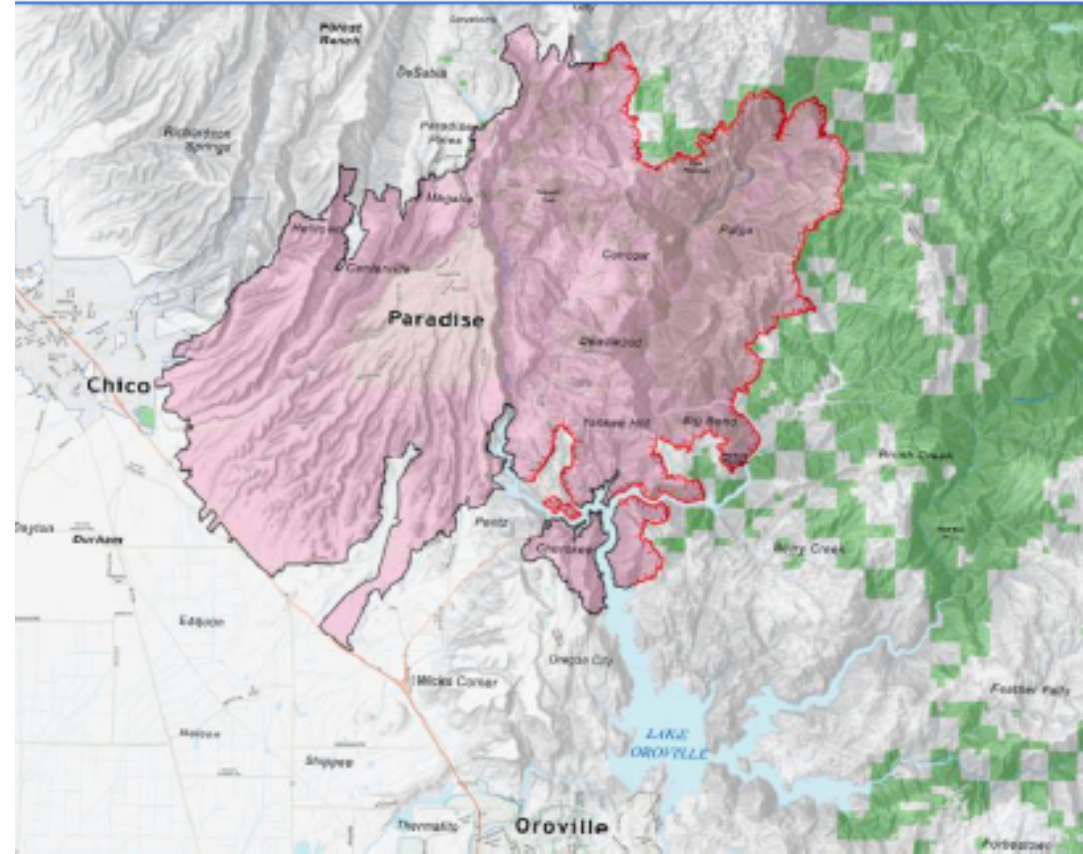
Community Housing Improvement Program
www.chiphousing.org

The Camp Fire

The Camp Fire was the deadliest, most destructive fire in California history.

- More than 19,000 structures destroyed
 - including over 14,000 homes,
- 85 people died
- 153,336 acres burned

Exhibit 2: Camp Fire Burn Scar Perimeter



Source: Cal Fire Public Information Map, November 18, 2018²¹

An Unprecedented Disaster

- Evacuations in place for 85 days.
- Congregate shelters open for 100 days.
- Non-Congregate sheltering continues.
- More than 14,000 households displaced

Image Source: *The Enterprise-Record*



Infrastructure & Business

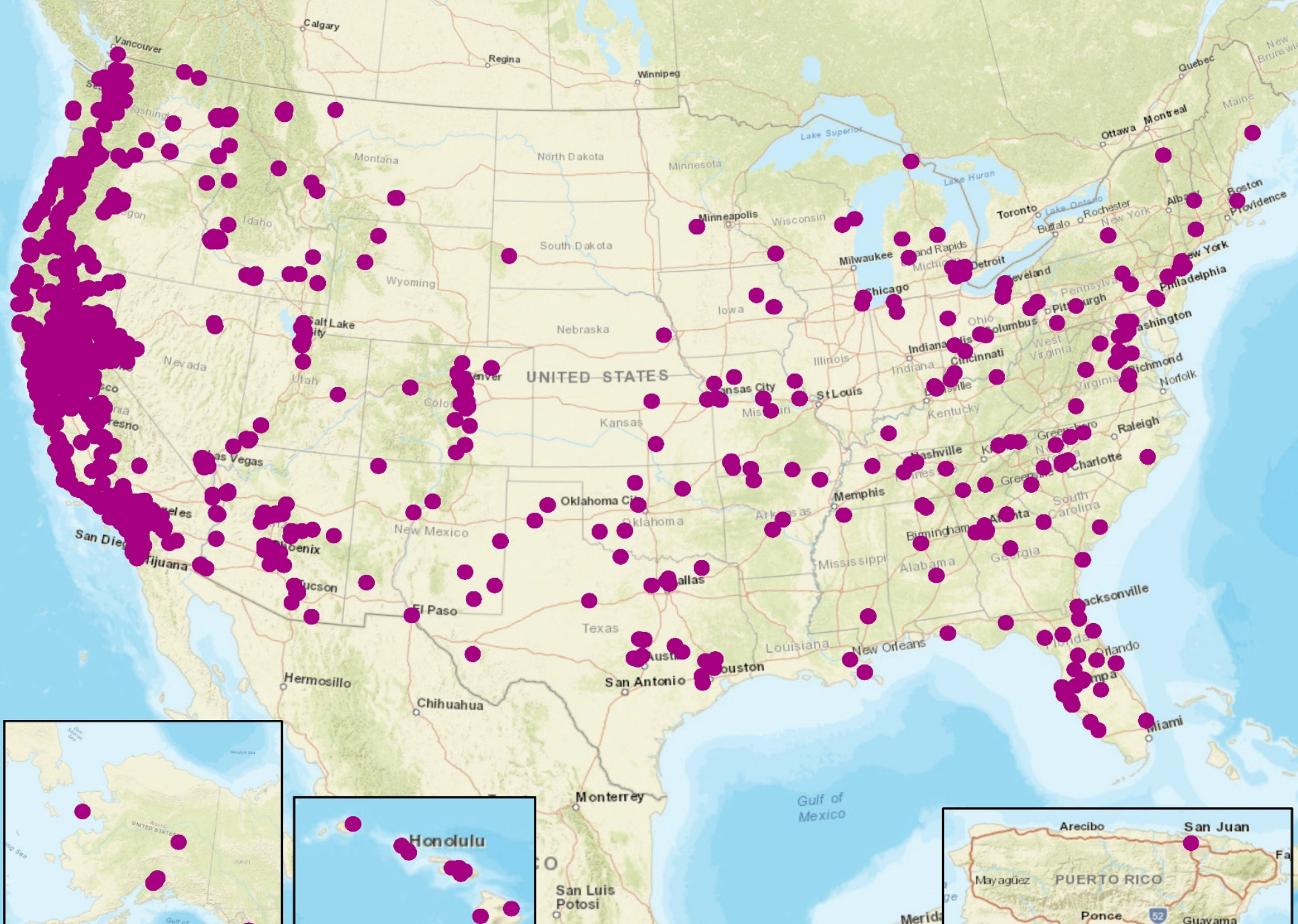
- Utilities
- Water systems
- County roads and facilities
- Regional Landfills and Recycling Facilities
- Private bridges and roads (no public assistance for recovery)
- Debris Removal
- Tree Removal
- 1,400 businesses destroyed
- Medical industry significantly impacted
- Impacts to employers in surrounding communities
- Tax-Credit Amenities gone – grocery stores, clinics, transportation, etc.
- Cost of Insurance

Community Impacts

- Trauma
- Crime
- Mental health
- Health Care Services
- Loss of Community – diaspora

Image Source: *The Enterprise-Record*





Data Layer / Map Description:
Number of IA applicants where
damaged dwelling address
is different than current address.

*Current Mailing Address (CMA) is
self-reported during registration
process and subsequent follow up
with IA & Case management,
exact location is not field verified.
Concentrated areas can be indicative
of an established P.O. Box.

Data as of 3/12/2019

Query used specific to this Map:

DAMAGED_ADDRESS_CITY =
'PARADISE' AND
VALID_REG = 'Y'

Legend

Applicant
reported
Current



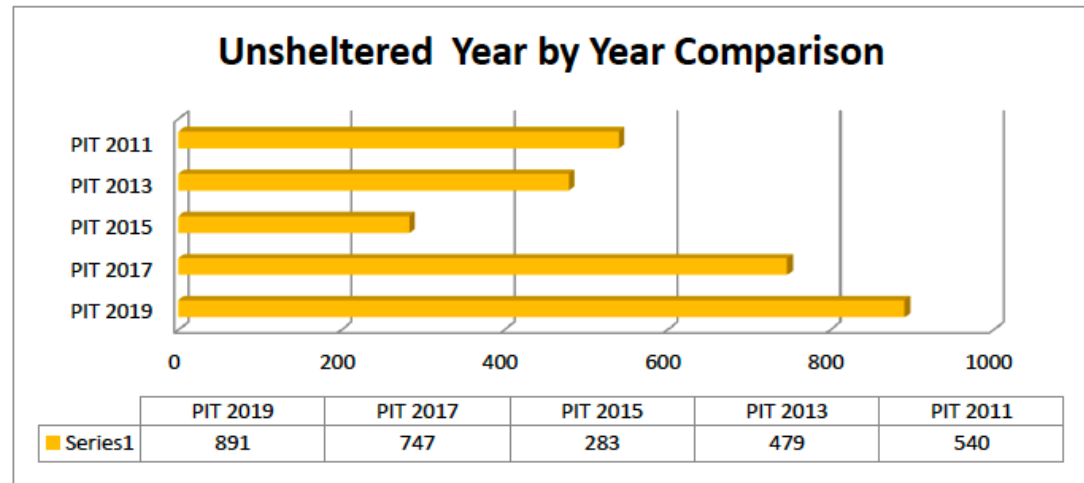
CHIP

Community Housing Improvement Program
www.chiphousing.org



Homelessness

- 2019 Point in Time
 - 16% Increase from 2017
 - Less than expected
 - 23% of respondents said they were impacted by the Camp Fire
- 33 individuals remain in TSA
- FEMA trailers still not fully online
- Many people still living precariously (RVs, cars, couch-surfing)



CHIP

Community Housing Improvement Program
www.chiphousing.org

Town of Paradise Recovery Plan

Vision:

Paradise is a town, rich in natural beauty and community spirit. As residents, we will work together to rise above any challenge. An unbreakable bond now exists that can be used to create a safer, stronger, more resilient town.

- Town Council adopted the Recovery Plan on June 25
- 18 Town-Led Projects and 22 Partner-Led Projects across all aspects of the Town's Recovery
- Goals
 - Make Paradise Safer
 - Rebuild Paradise's Range of Housing and Welcome Residents Home
 - Rebuild Paradise's Economy
 - Make Paradise Better
 - Make Paradise Greener



The Path Forward

- State support / funding
- Rural re-designation
- CDBG-DR – moving relatively quickly
- Private Philanthropy
 - North Valley Community Foundation
 - Sierra Nevada
 - Butte Strong Fund
- Private Capital
- Bi-partisan



CHIP

Community Housing Improvement Program
www.chiphousing.org

Resources

- Community Disaster Recovery – Joan Rave, Federal Disaster Recovery Coordinator FEMA, Powerpoint
- Camp Fire Impacts/Butte County – Shari McCracken, Butte County Chief Administrative Officer, Powerpoint
- Housing Impact Assessment May 6, HUD Housing Recovery Support Function
- Department of Finance Report: May 1, 2019. Re: Demographic changes, impact of fire on local populations, housing
- Butte County Continuum of Care 2019 Point in Time Executive Summary
- *The Enterprise-Record* – Images
- KQED