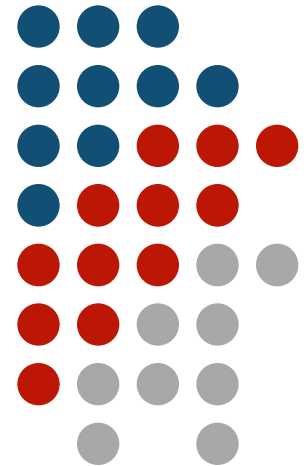
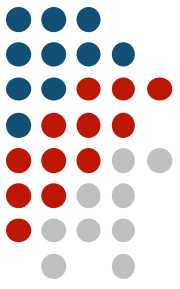


Opportunity Mapping

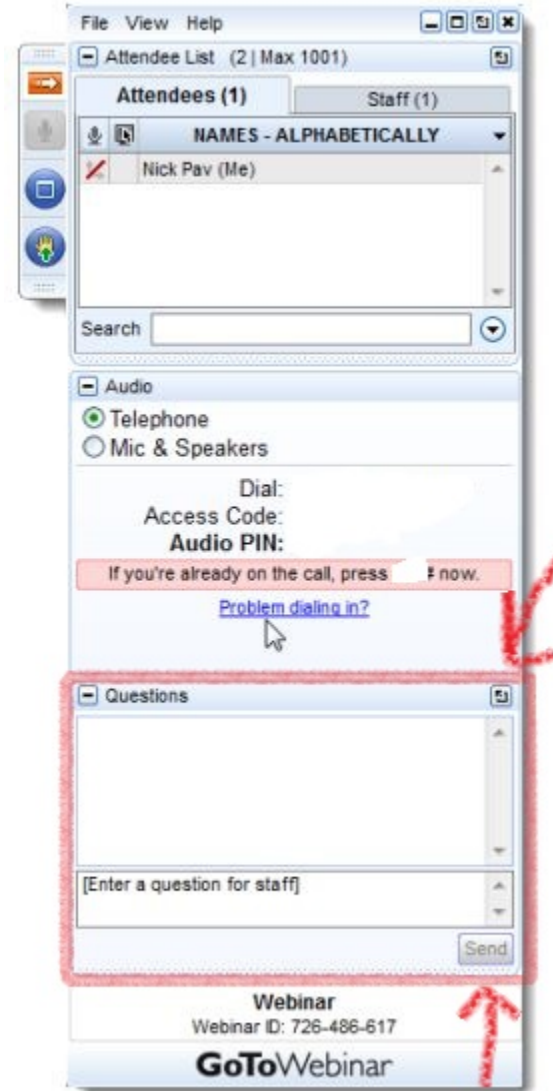
Brian Stromberg
National Housing Conference
June 21, 2016

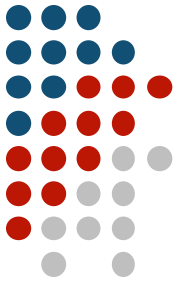




Questions & technical details

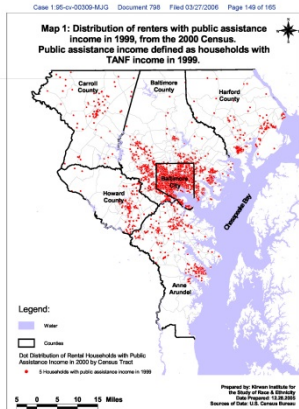
- A link to view the presentation and download slides will be emailed to everyone who registered
- Ask us questions via the Questions box in your GoToWebinar module
- Use the Help menu or visit <http://support.citrixonline.com/> for support



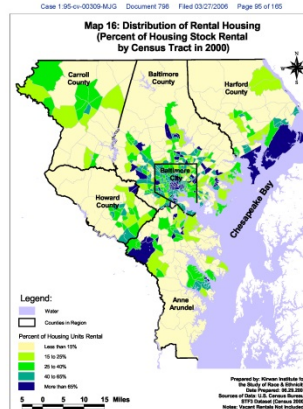


What is Opportunity Mapping?

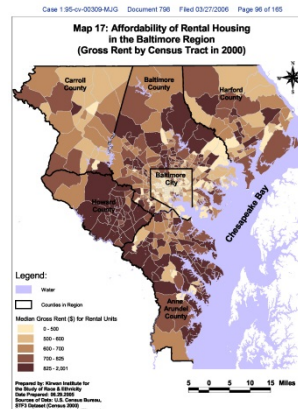
- Use of **geographic data** to identify places that provide the chance for **greater well being**
- **Indicators** overlaid to create a **composite index**



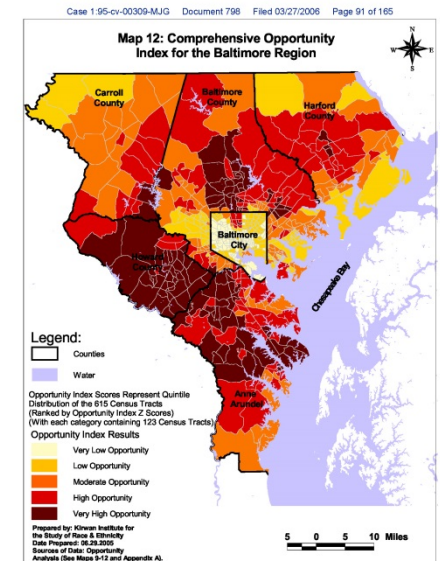
+

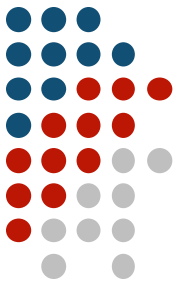


+



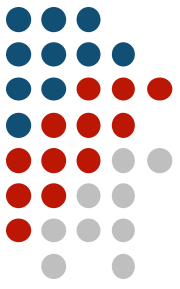
=





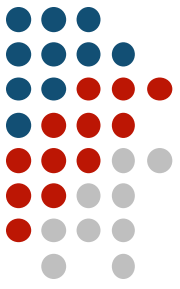
Why Do Opportunity Mapping?

- Chance to **engage** with **community**
- **Required** for federal programs
 - Sustainable Communities Initiative (SCI)
 - Assessment of Fair Housing (AFFH rule)



Data Resources

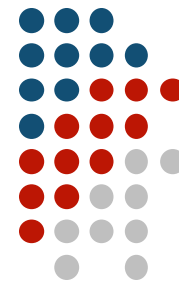
- **Local resources**
 - School districts, city government, etc.
 - Example: Washington, DC
- **Opportunity Project**
 - 12 cities and federal government
 - opportunity.census.gov
- **Online services** – require subscription
 - ArcGIS Online
 - Policymap



Data Tools

- **Desktop GIS**
 - ESRI ArcGIS – Requires licensing
 - Quantum GIS (QGIS) – Open source
- **Online mapping tools**
 - Mapbox
 - CartoDB
 - Policymap
 - Social Explorer
 - HUD's AFFH Tool (AFFHT)

Contact Information



Brian Stromberg

bstromberg@nhc.org

202-466-2121x249